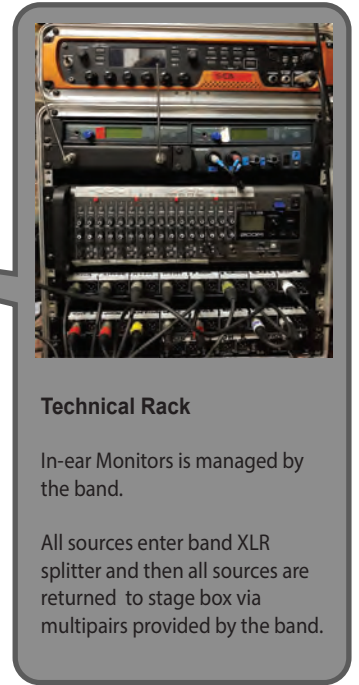
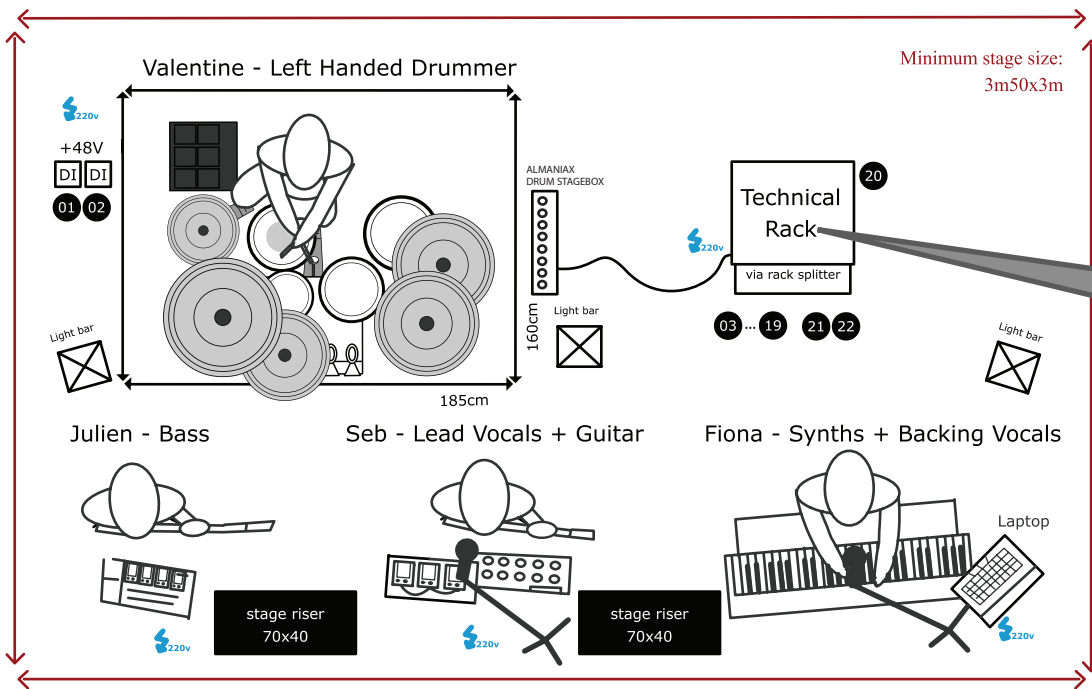


# ALMANIAX

## Technical Rider - 2025 Tour

Band: AlmaniAx - 4 musicians



### OPTION A Full Sonorisation - Big Clubs and Festivals

Important! Volume automations are already included in guitars and synths lines.  
(For example: Guitar Solo are louder than rythm parts and verse atmo are quieter)

#	Instrument	Source	Comments
01	Kick Trigger + 48V	XLR - Line Level	Main Sound for the kick + sub drop
02	Snare Trigger + 48V	XLR - Line Level	Main Sound for the snare + pads
03	Kick Mic	XLR - MIC	Kick mic to merge with kick trigger
04	Snare Mic	XLR - MIC	Snare mic to merge with snare trigger
05	High Tom Mic	XLR - MIC	
06	Mid Tom Mic	XLR - MIC	
07	Floor Tom Mic	XLR - MIC	
08	/	/	If you want you can add HH MIC here
09	OH L (optional)	XLR - MIC	Can be used in the FOH based on the size of the venue
10	OH R (optional)	XLR - MIC	Microphones always there for in-ear monitors
11	Bass DI	XLR - DI	Comes from SansAmp DI
12	/	/	/
13	Guitars L	XLR - Line Level	pre-mix of the different guitar sounds <b>! Volume changes automation already in the pre-mix.</b>
14	Guitars R	XLR - Line Level	<b>! Guitars and synths volume need to be locked together to follow automation in the songs</b>
15	Synths L	XLR - Line Level	<b>! Volume changes automation ! Guitars and synths volume need to be locked together to follow automation in the songs</b>
16	Synths R	XLR - Line Level	
17	Lead Vocal (Wet with FX)	XLR - Line Level	Vocal with compression, delays and verb
18	Lead Vocal (Dry) (OPTION)	XLR - MIC	Direct Split of lead Vocal Mic - BETA58 Can be used instead of 17.
19	Backing Vocal (Wet with FX)	XLR - Line Level	Vocal with compression, delays and verb
20	Backing Vocal (Dry) (OPTION)	XLR - MIC	Direct Split of Backing Vocal Mic - BETA58 Can be used instead of 19.

### Wireless

- Seb - InEar - Sennheiser EW-G2 831.500 MHz
- Julien - In ear - Shure PSM200 864.425 MHz
- Seb - Guitar Line 6 Relay G30 2,4 GHz
- Julien - Bass Line 6 Relay G30 2,4 GHz
- Wireless DMX 2,4 GHz

### Band brings

1x Drum set (except on drum shared set-up)  
(1x Kick, 1x Snare, 3x toms, 1x HH, 2x crashes, 1x ride, 1x china, 1x e-drums pad)  
7x drums microphones + stands

2x vocal microphones (BETA58) + stands

1x Laptop + stand

2x stage risers (70x40cm)  
1x Technical Rack (with in-ear system & splitters)

2x DI (for #01 & #02)  
2x multipair Cables (8XLR)  
1x Stagebox for our technical rack

3x Light bars (sync with the show)

**! NO wedges needed on stage**

**OPTION B** Partial Sonorisation - Small Clubs

To allow an easy mix on smaller venue, we can provide pre-mixed instruments groups. This group will be fine tuned based on the need in the room during balances.

#	Instrument	Source	Comments
21	Drums L	XLR - Line Level	Pre-mixed drums adjusted during balance
22	Drums R	XLR - Line Level	
11	Bass DI	XLR - DI	Comes from SansAmp DI
15	Guitars + Synths L	XLR - Line Level	Pre-mixed guitars and synths adjusted during balance
16	Guitars + Synths R	XLR - Line Level	
17	Lead Vocal (Wet with FX)	XLR - Line Level	Vocal with compression, delays and verb
19	Backing Vocal (Wet with FX)	XLR - Line Level	Vocal with compression, delays and verb

**OPTION C** Full autonomy - Clubs and Bars

The band can also provide a full mix, managed via the band's in ear monitoring system.

#	Instrument	Source	Comments
21	Full Mix L	XLR - Line Level	Mix provided via band in-ear monitor system
22	Full Mix R	XLR - Line Level	

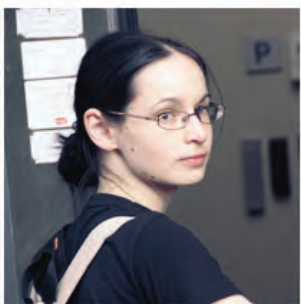
Band: Almaniax  
4 musicians

**Members**

Sébastien Rombout - Lead Vocals + Guitar  
Fiona Rombout - Synths + Backing Vocals  
Valentine Potten - Drums  
Julien Fierens - Bass

**Catering specifications**

2x vegetarian  
2x any



**Booking Contact:**  
Valentine Potten  
booking@almanix.be  
+32 (0)486/92.59.18



**Technical Contact:**  
Sébastien Rombout  
info@almanix.be  
+32 (0)496/36.61.03



## APPENDIX Shared Drum Kit Requirements

### !! IMPORTANT: LEFT-HANDED DRUMMER

Our drummer is left-handed. Therefore, the drum kit must be configured in an inverted (left-handed) setup for our performance. Please allow sufficient time before and after our set for this reconfiguration.

#### Drum Kit Hardware – To Be Provided by the Festival

- Kick drum
- Three toms: one high tom, one mid tom, and one floor tom + stands
- 4 Cymbal stands for mounting cymbals (note: we will be using our own cymbals, see below).

#### Audio Routing:

The drum kit's mics must be routed through our technical rack's splitter. This is essential for feeding our in-ear monitoring system before the signal is sent back to the venue's stage box.

Drums input needed in our technical rack's splitter

- Kick Mic
- Snare Mic
- Hi-Tom Mic
- Mid-Tom Mic
- Floor-Tom Mic
- Overhead Left Mic
- Overhead Right Mic

#### EQUIPMENT PROVIDED BY ALMANIAX

##### Cymbals:

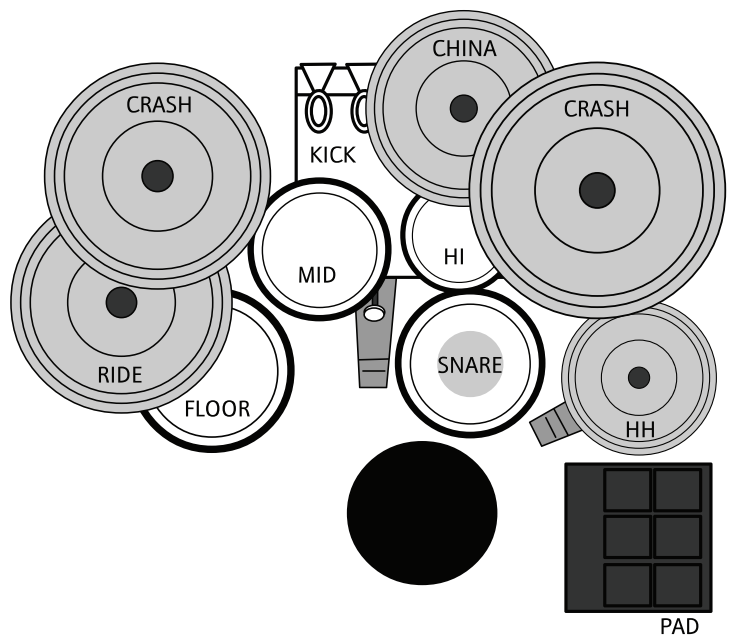
- 1 hi-hat cymbal + pedal
- 2 crash cymbals
- 1 china cymbal
- 1 ride cymbal

##### Other Drum Components:

- Snare drum + stand
- Kick pedal
- Drum seat

##### Triggering & Sampling:

- A pad/sampler unit + stand
- Drum triggers for snare and kick drum



#### Additional Notes

Please confirm the configuration available on-site in advance to ensure compatibility with our setup